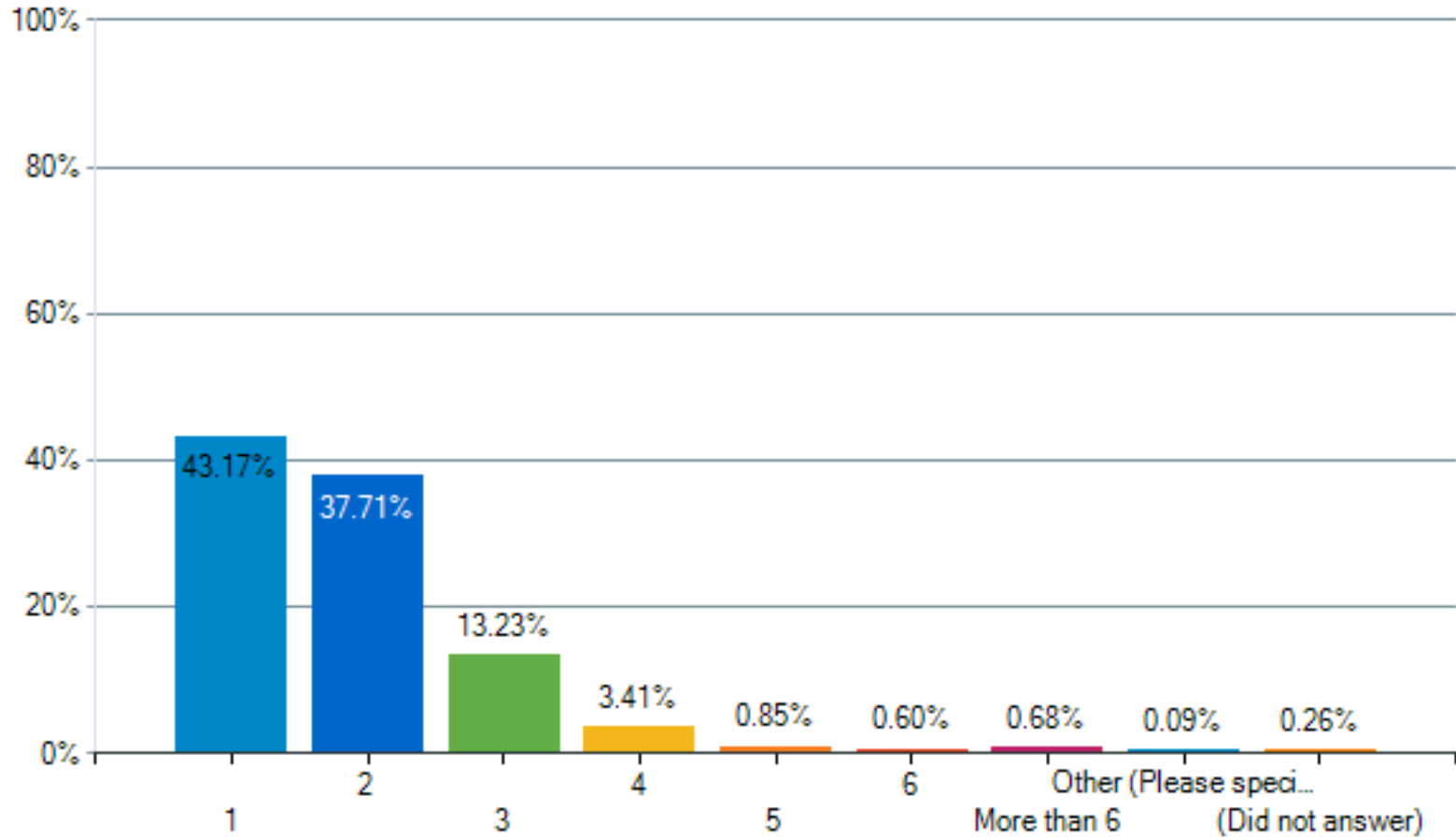


Lockhart ISD Reopening of Schools Parent Survey

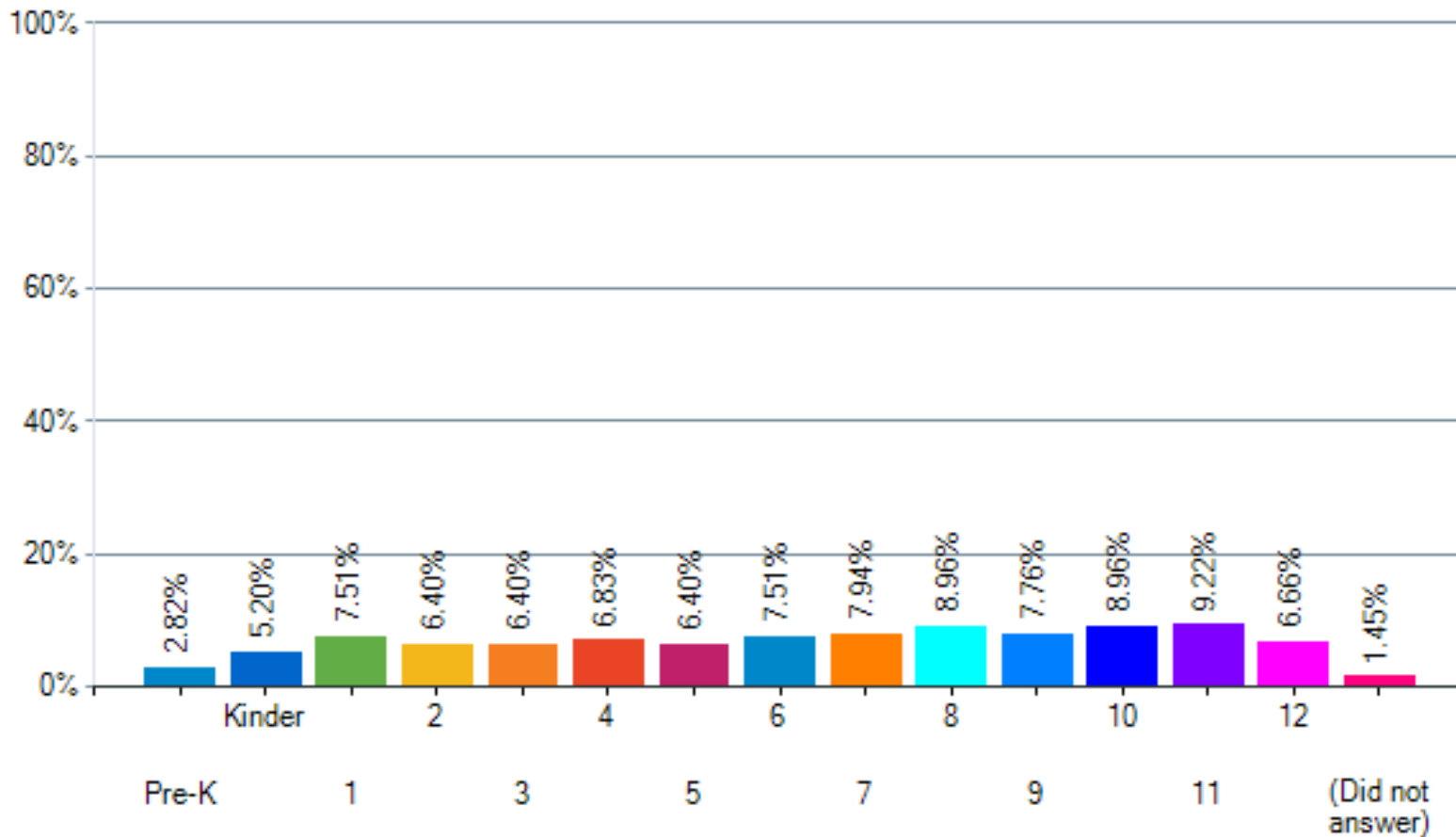
K12 Insight Export

Copyright (c) 2002-2020 K12 Insight, LLC. All rights reserved

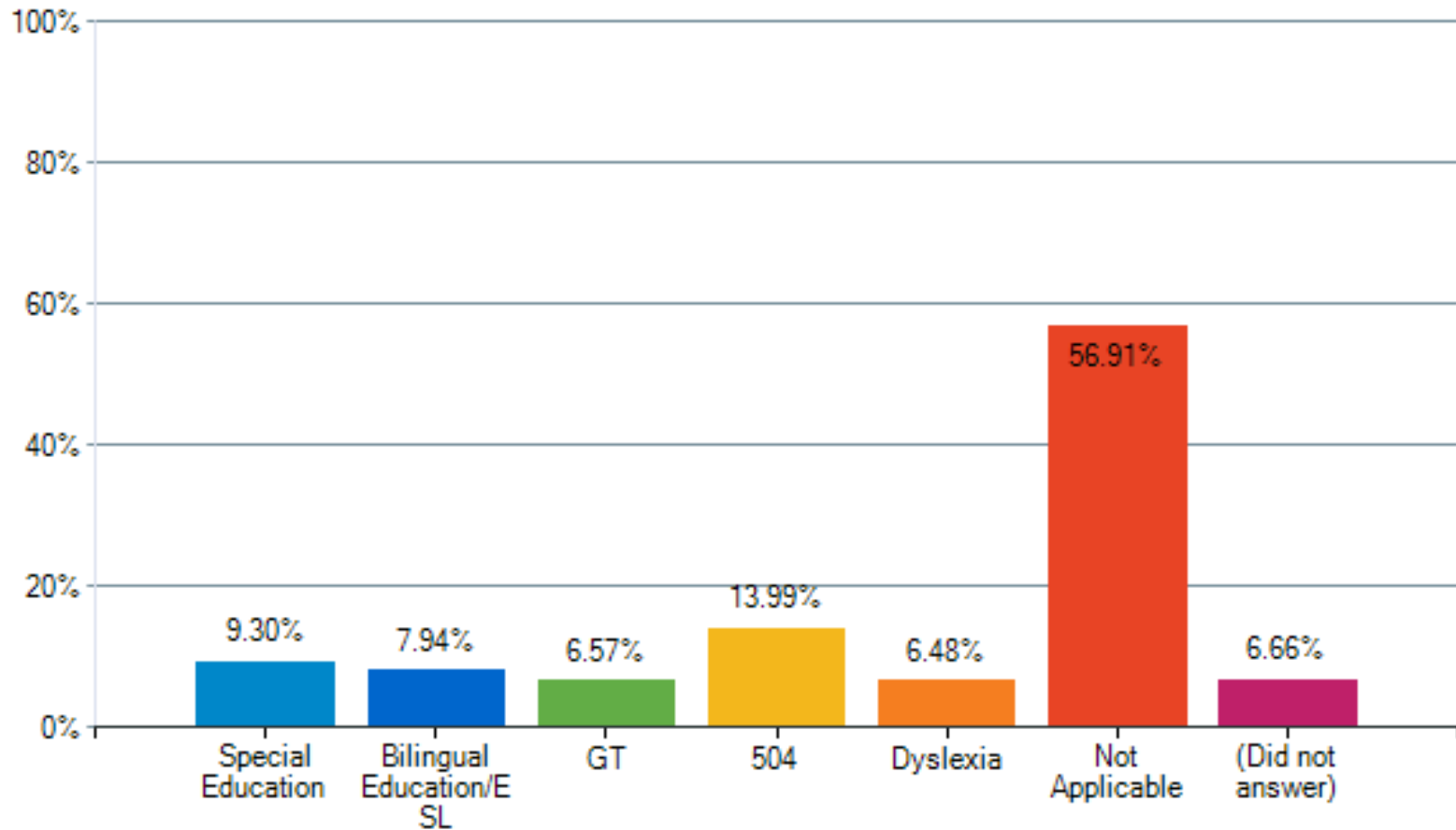
How many children in your family will attend Lockhart ISD schools in 2020-2021?



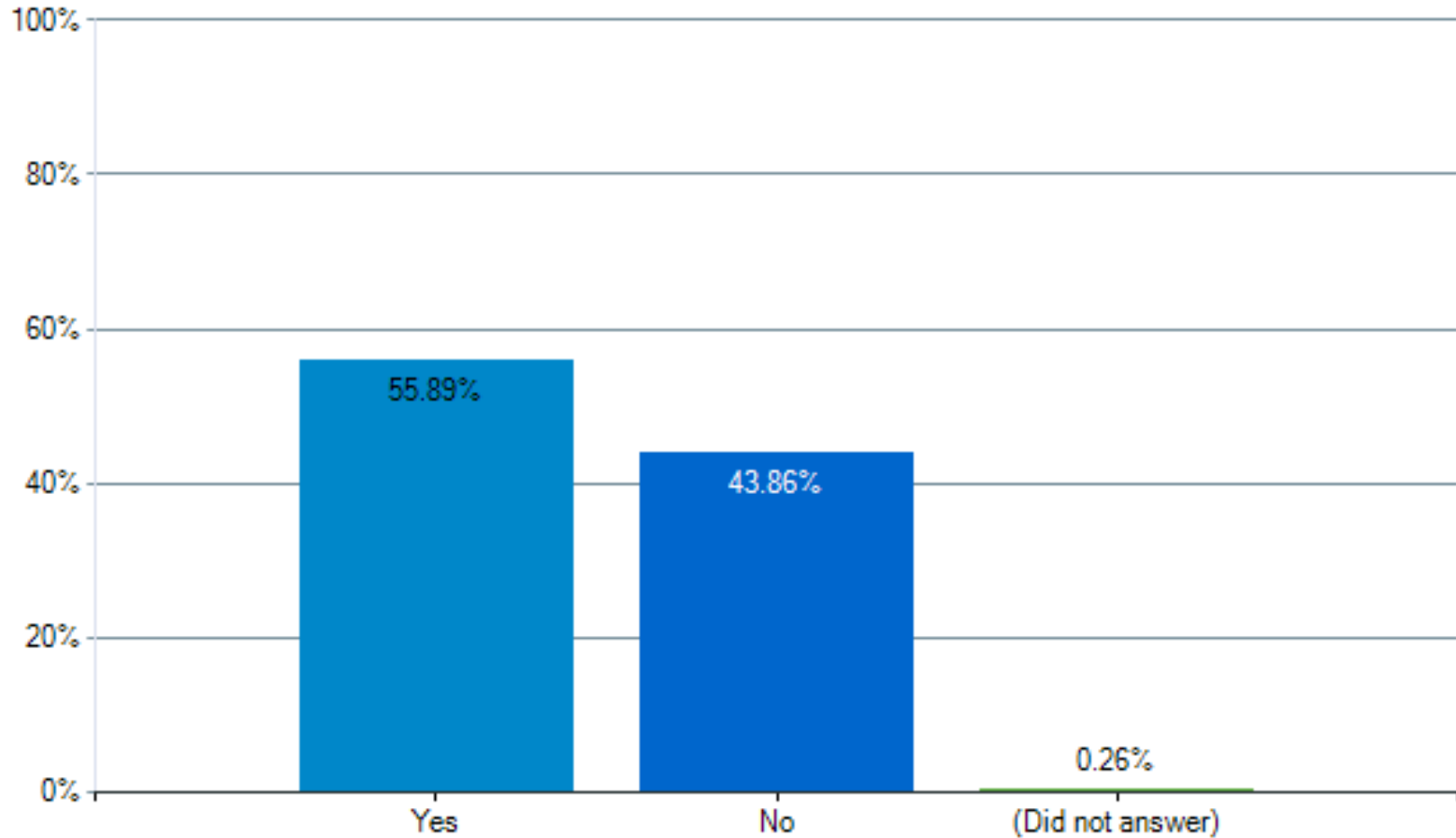
What grade level will your child enter in the 2020-2021 school year? (Select grade level)



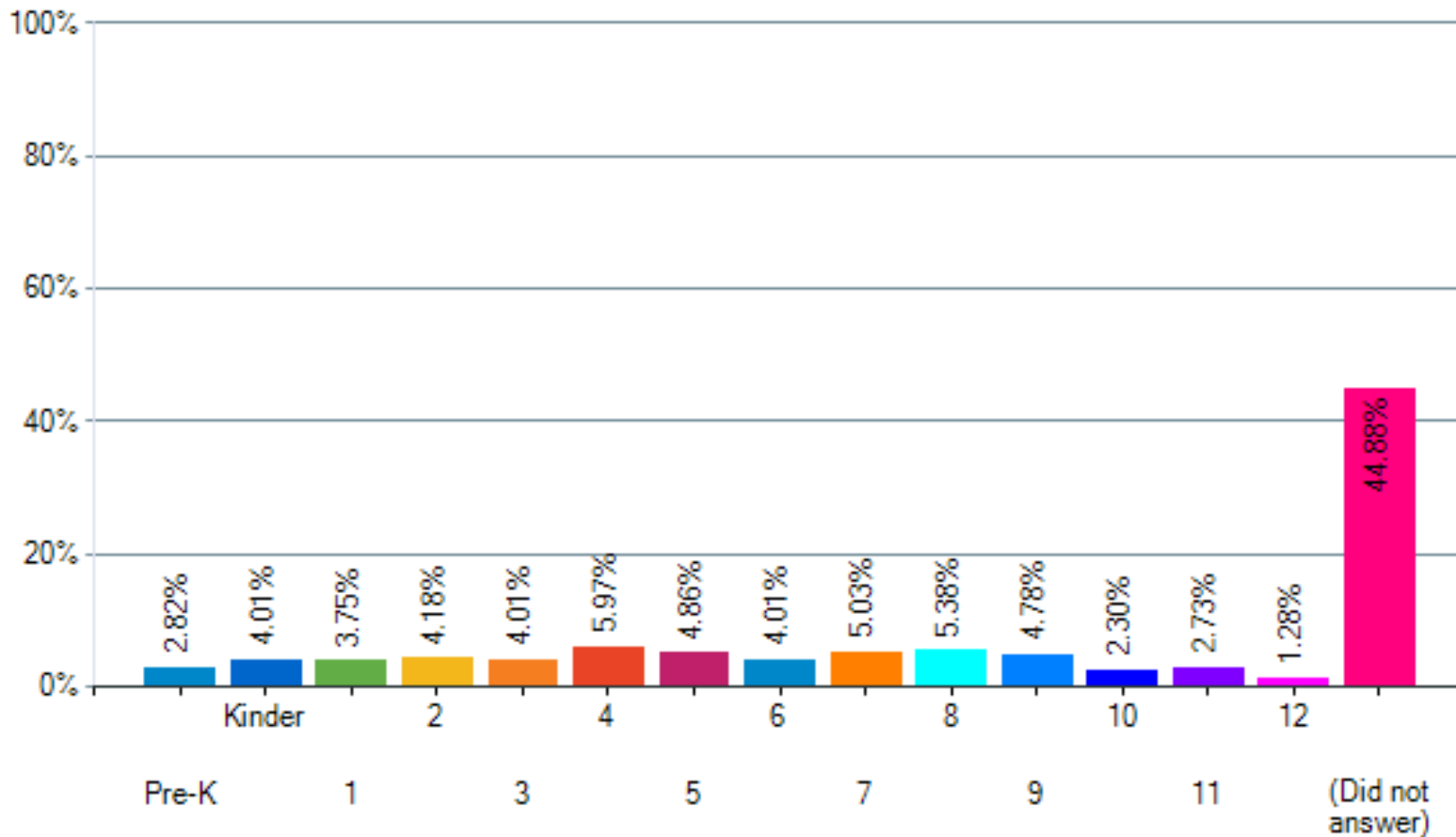
Does your child participate in the following programs? (Check all that apply)



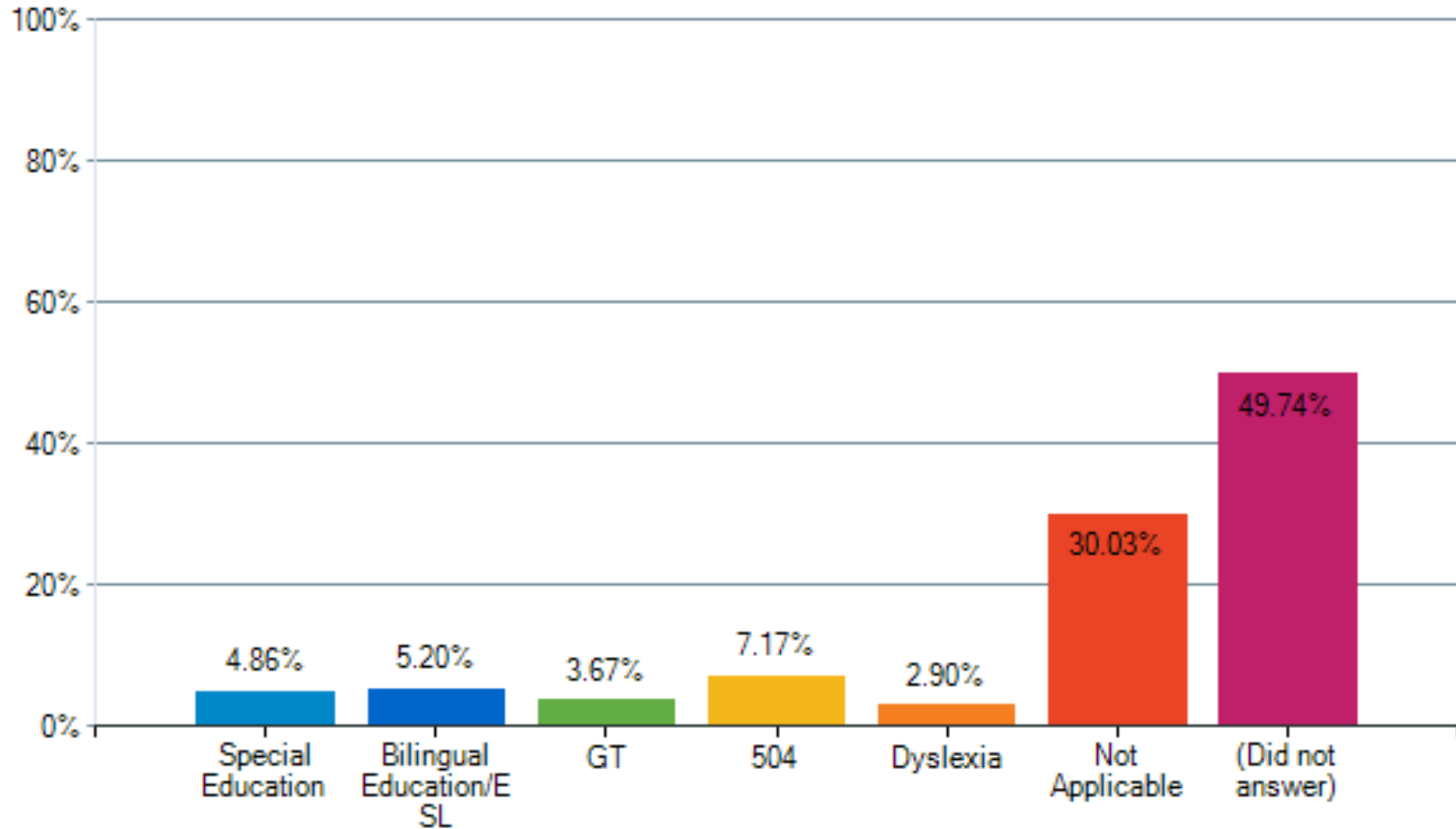
Do you have another child who will attend Lockhart ISD



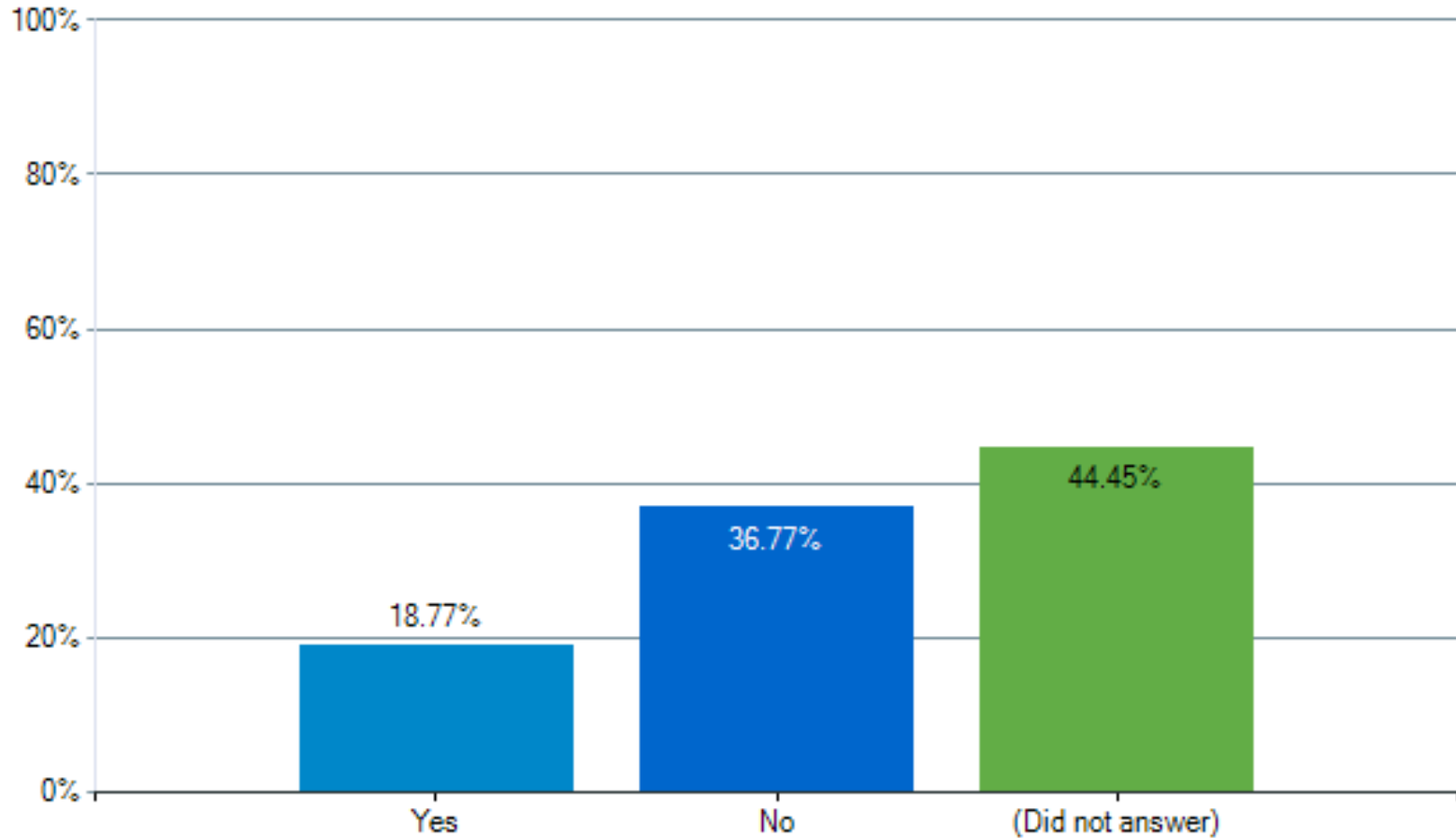
What grade level will your child enter in the 2020-2021 school year? (Select grade level)



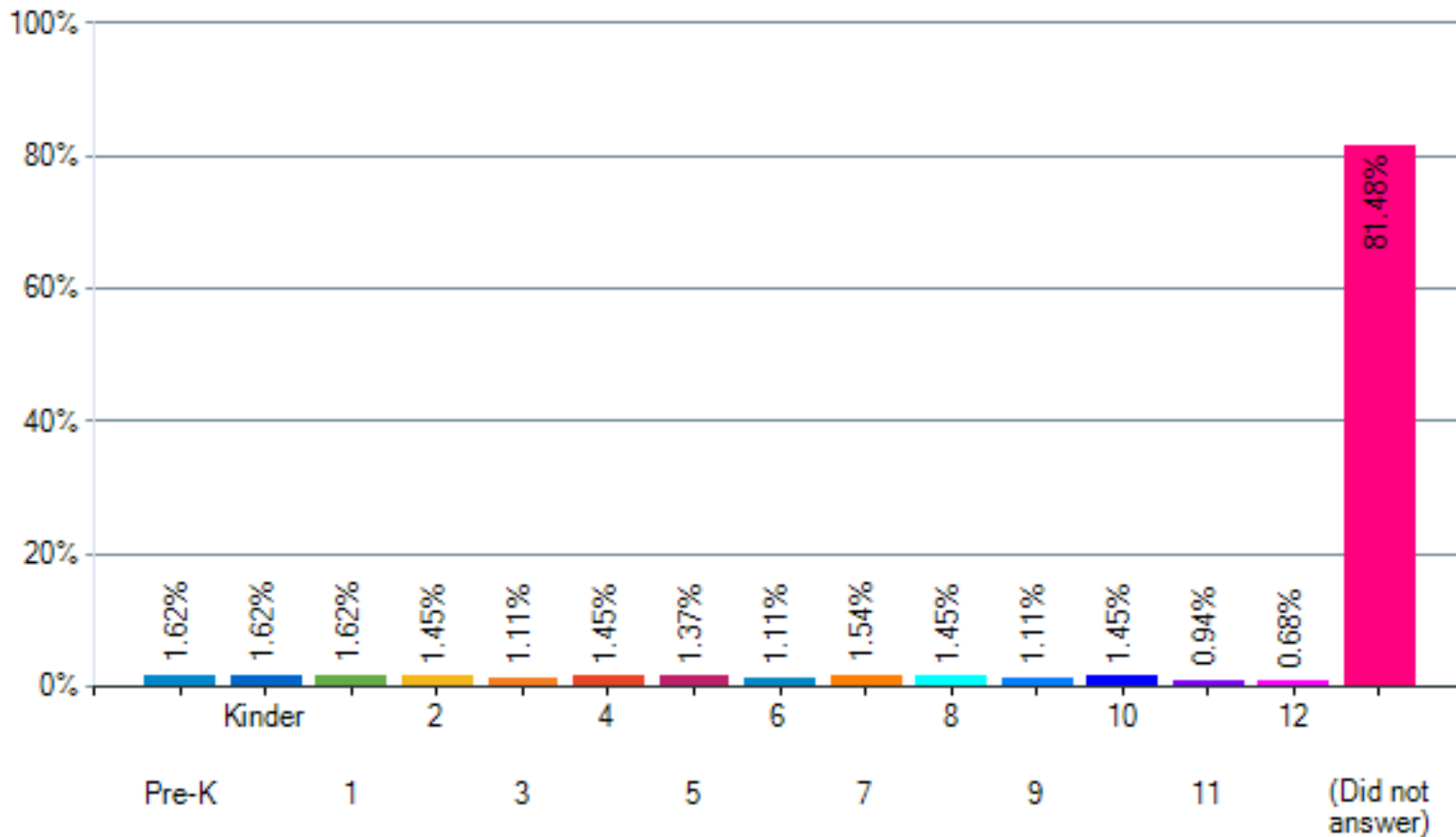
Does your child participate in the following programs? (Check all that apply)



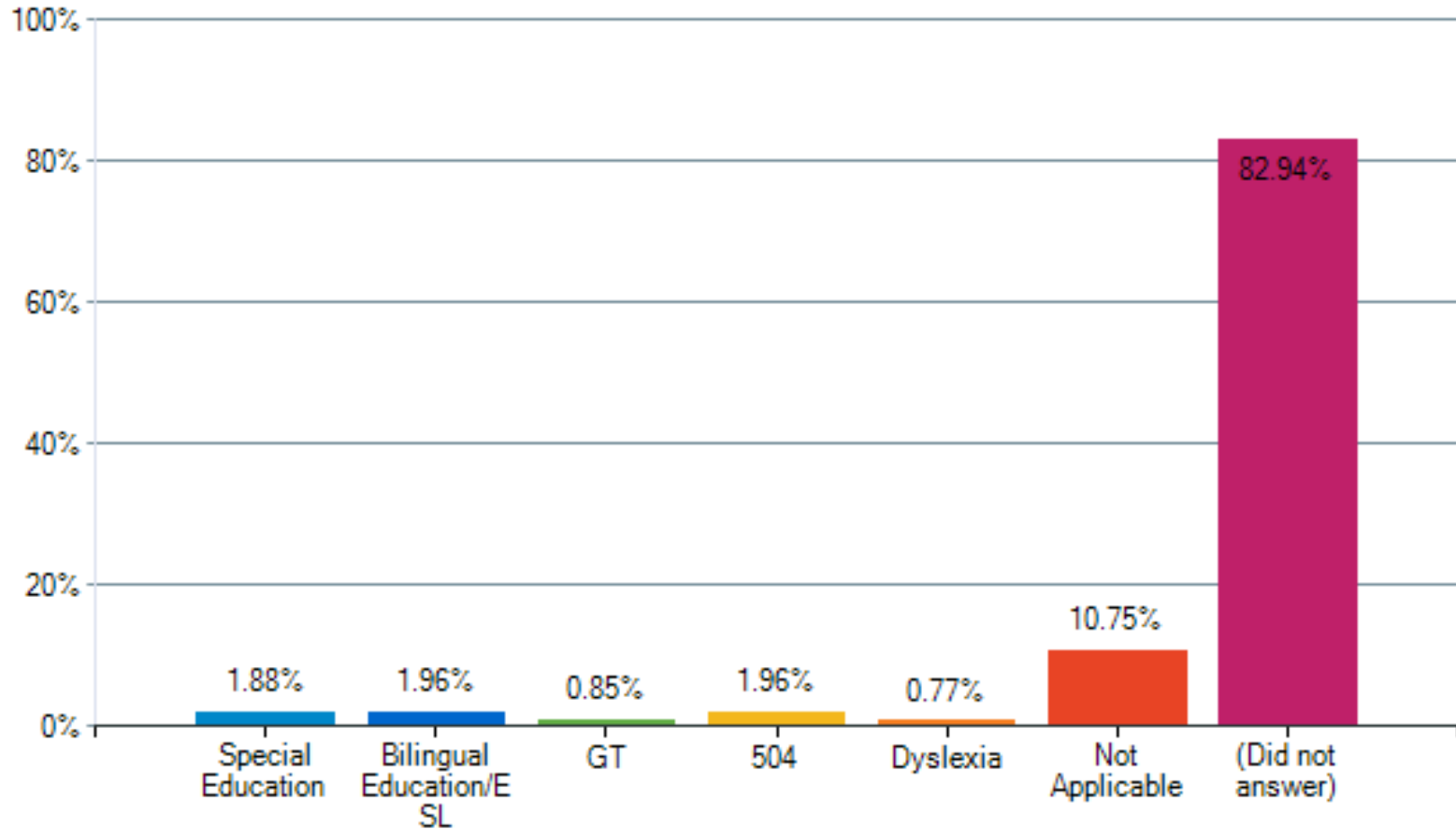
Do you have another child who will attend Lockhart ISD



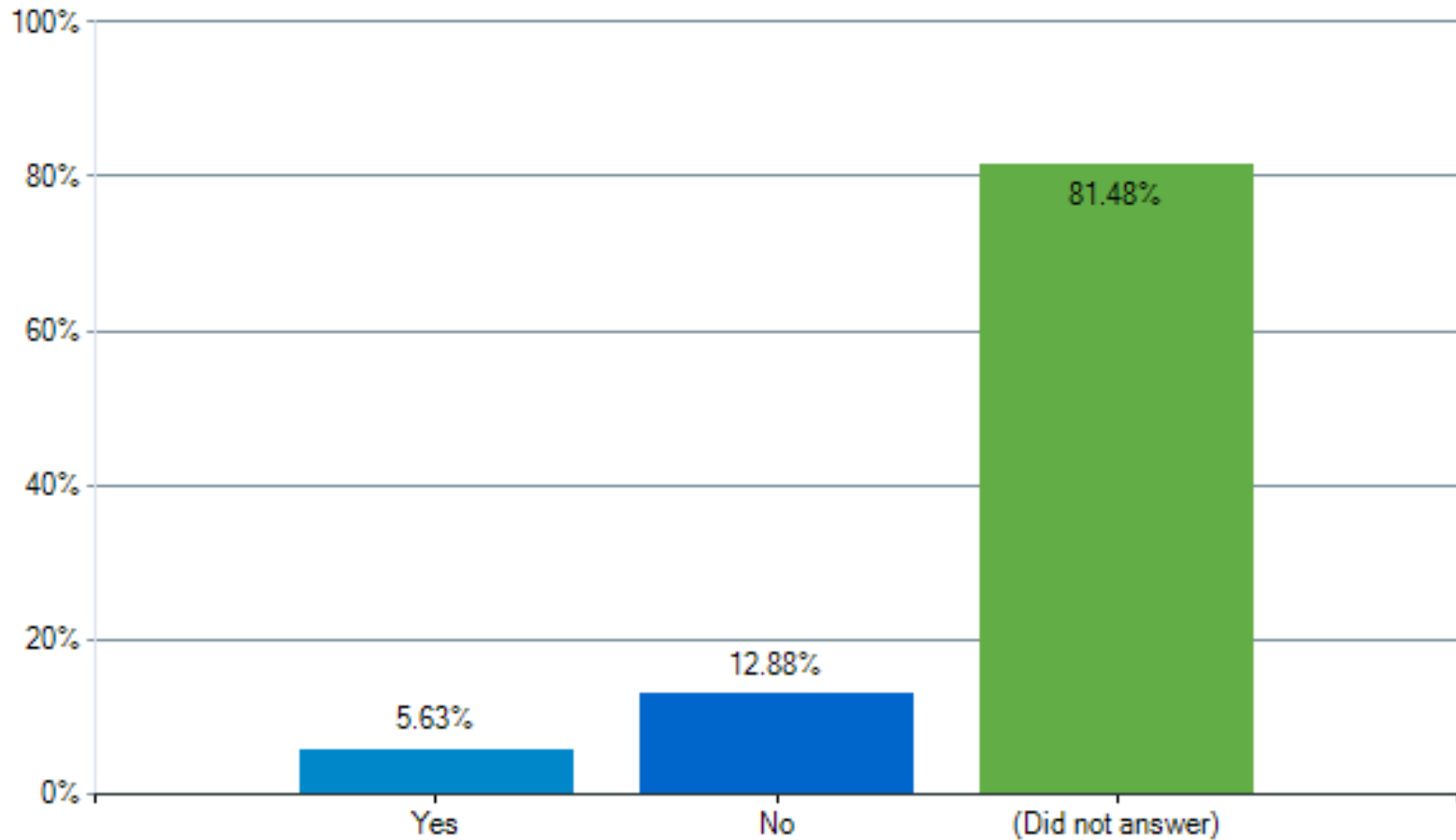
What grade level will your child enter in the 2020-2021 school year? (Select grade level)



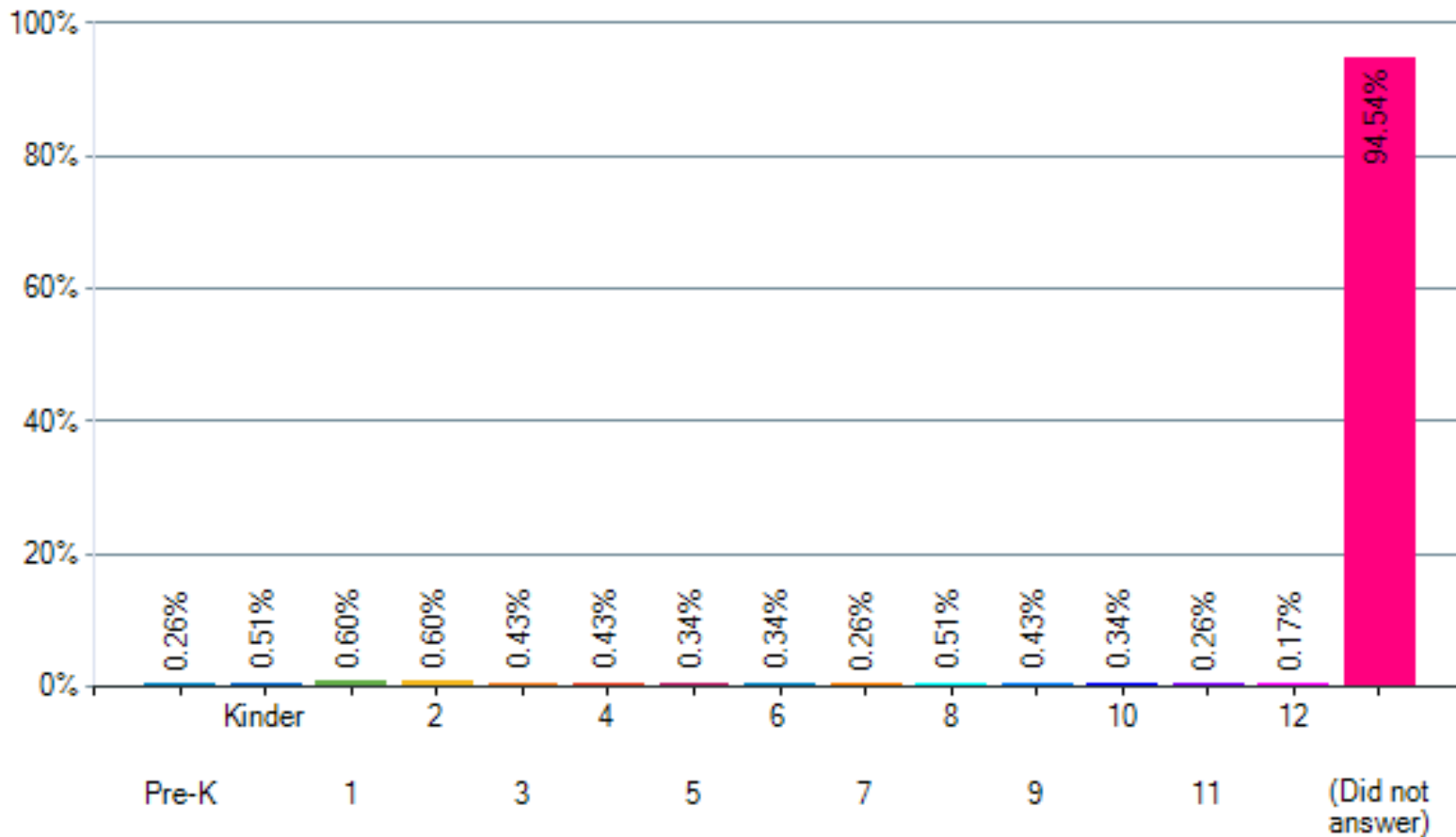
Does your child participate in the following programs? (Check all that apply)



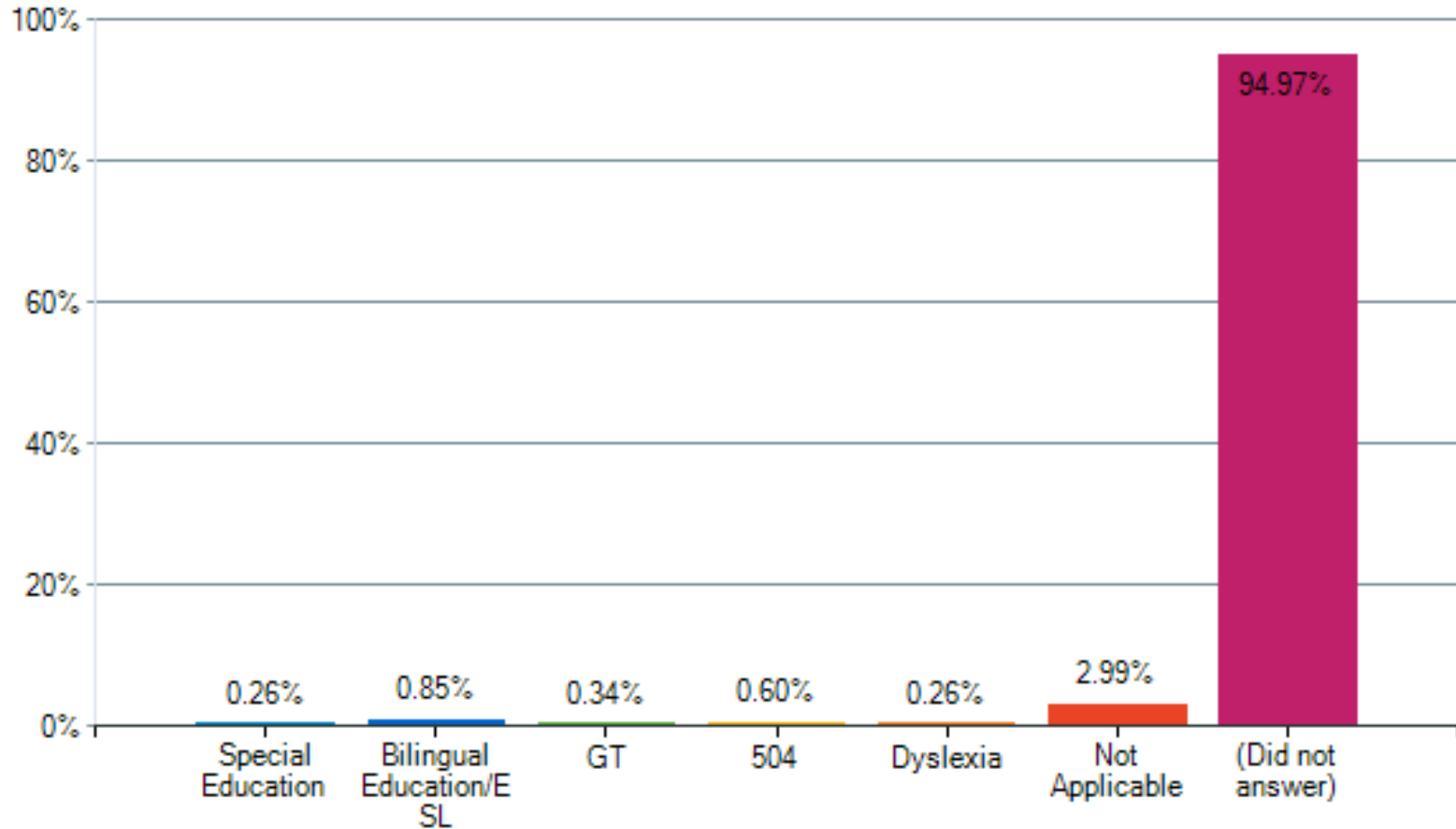
Do you have another child who will attend Lockhart ISD



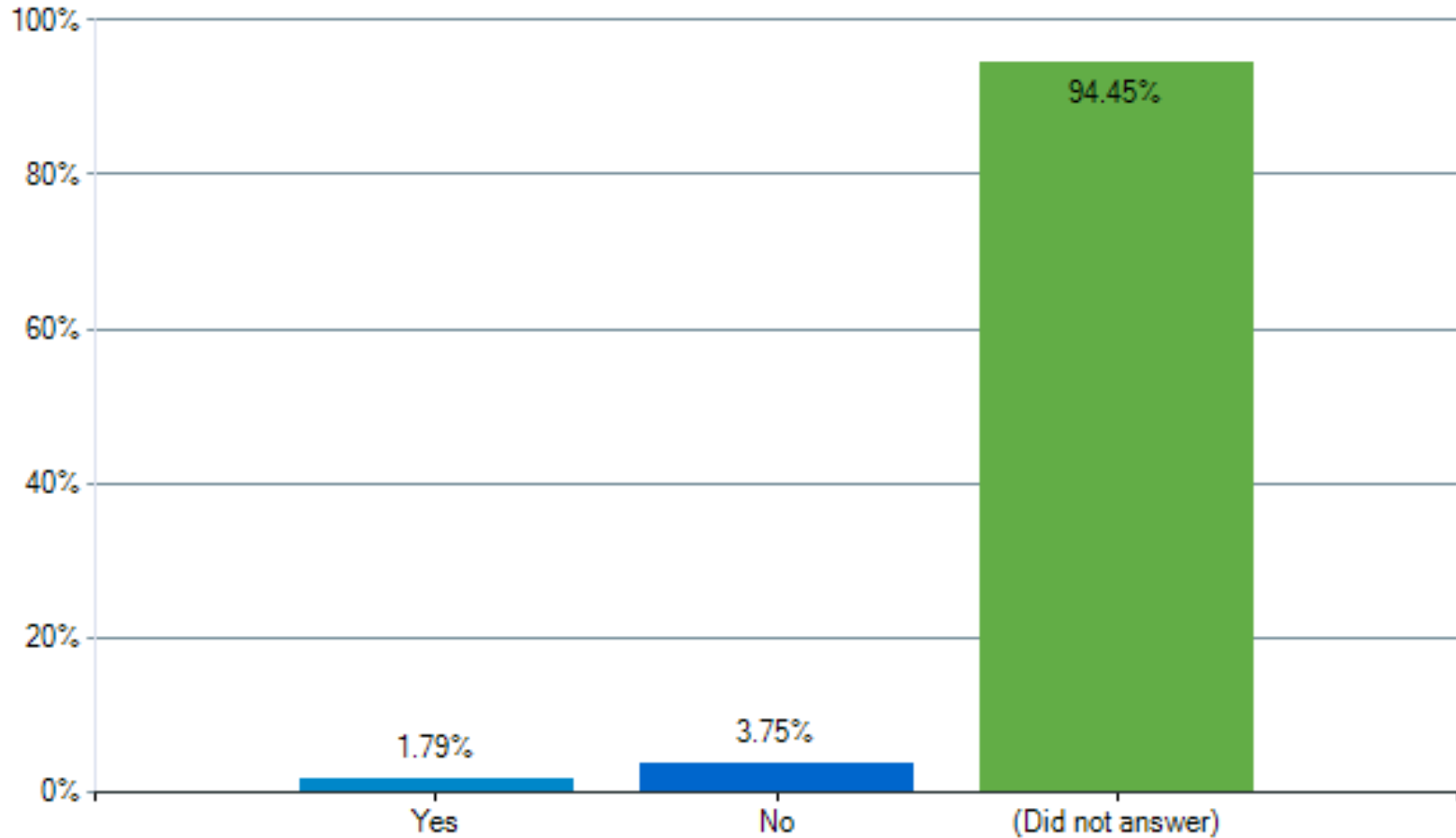
What grade level will your child enter in the 2020-2021 school year? (Select grade level)



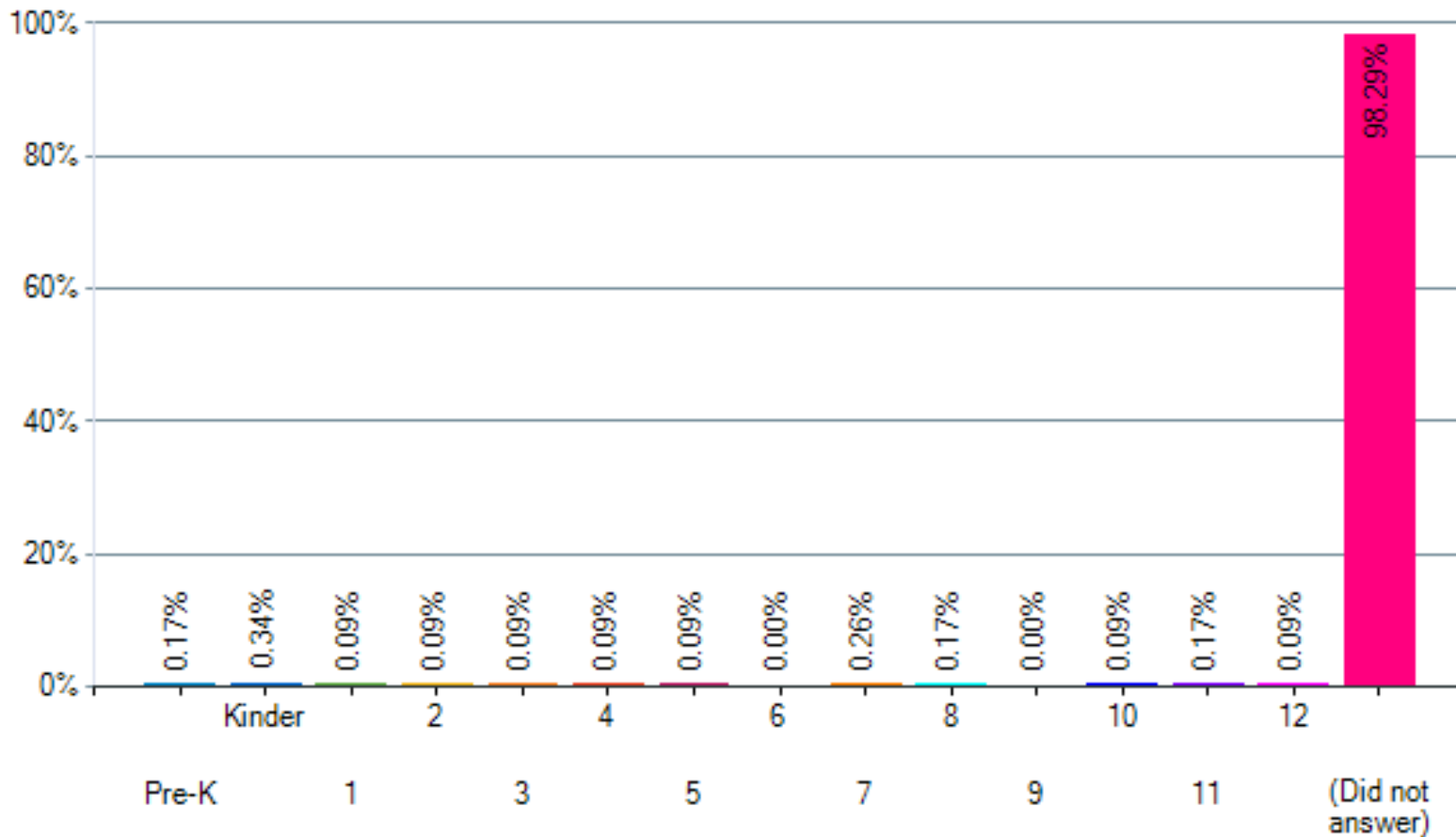
Does your child participate in the following programs? (Check all that apply)



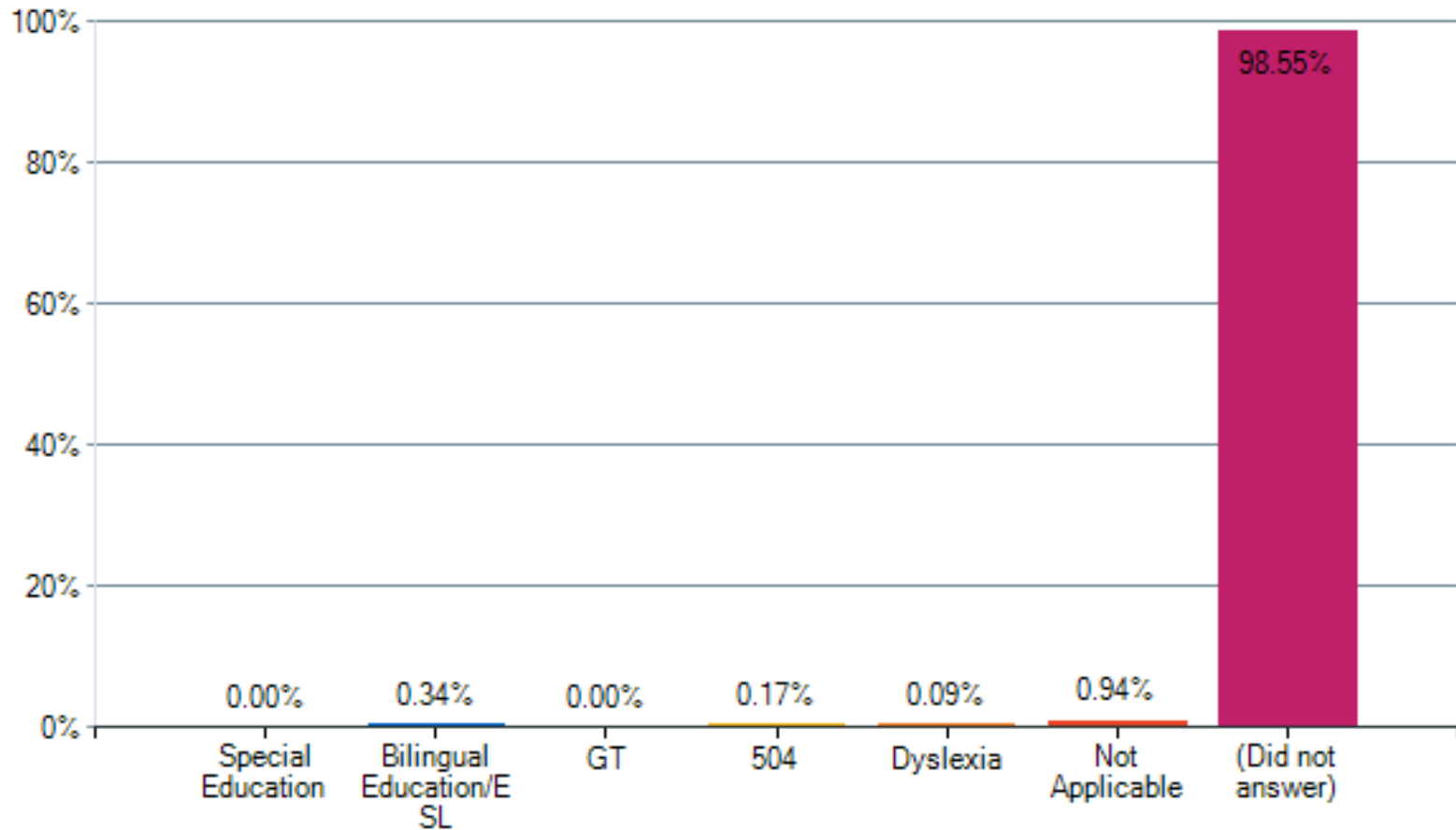
Do you have another child who will attend Lockhart ISD



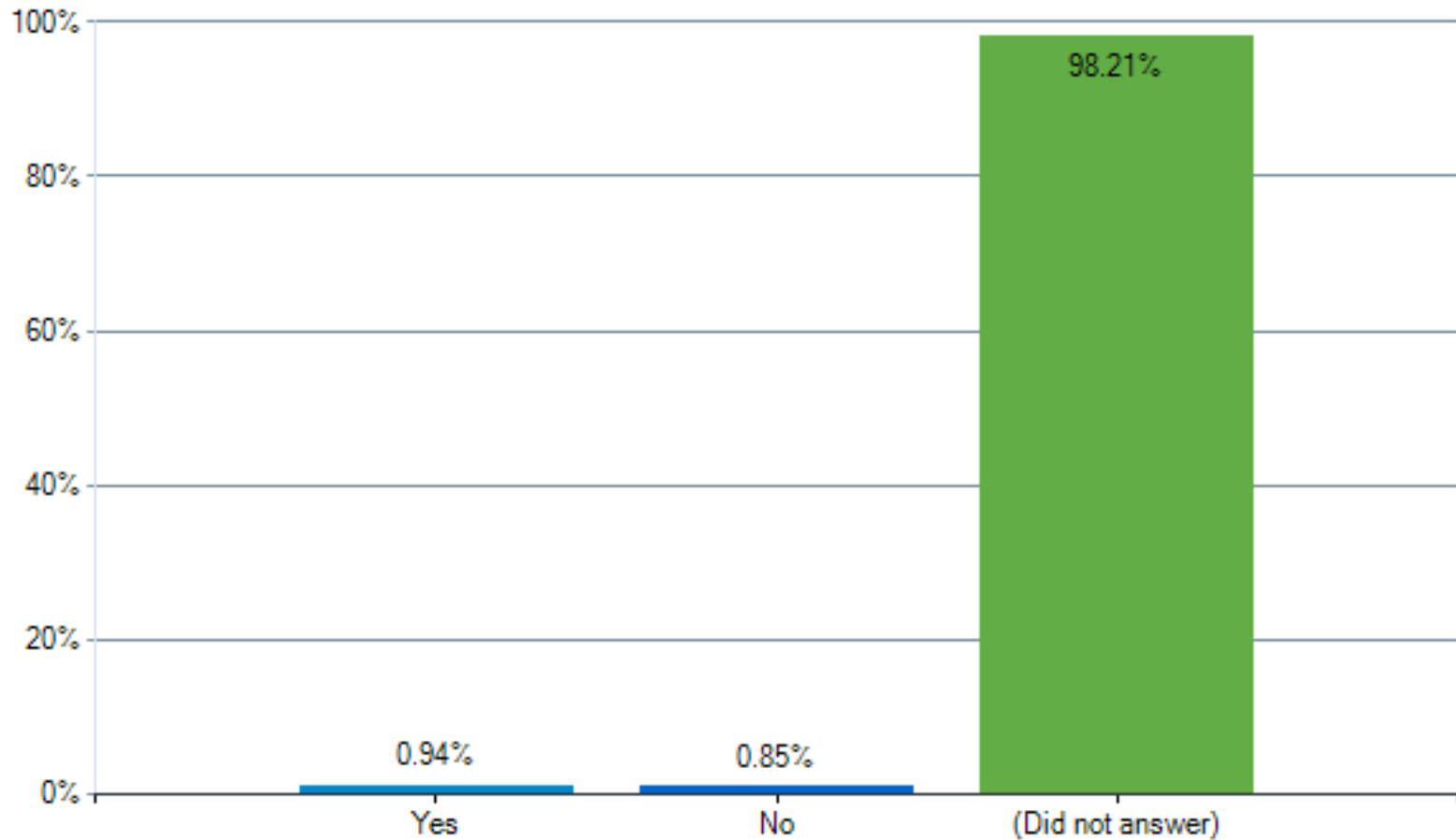
What grade level will your child enter in the 2020-2021 school year? (Select grade level)



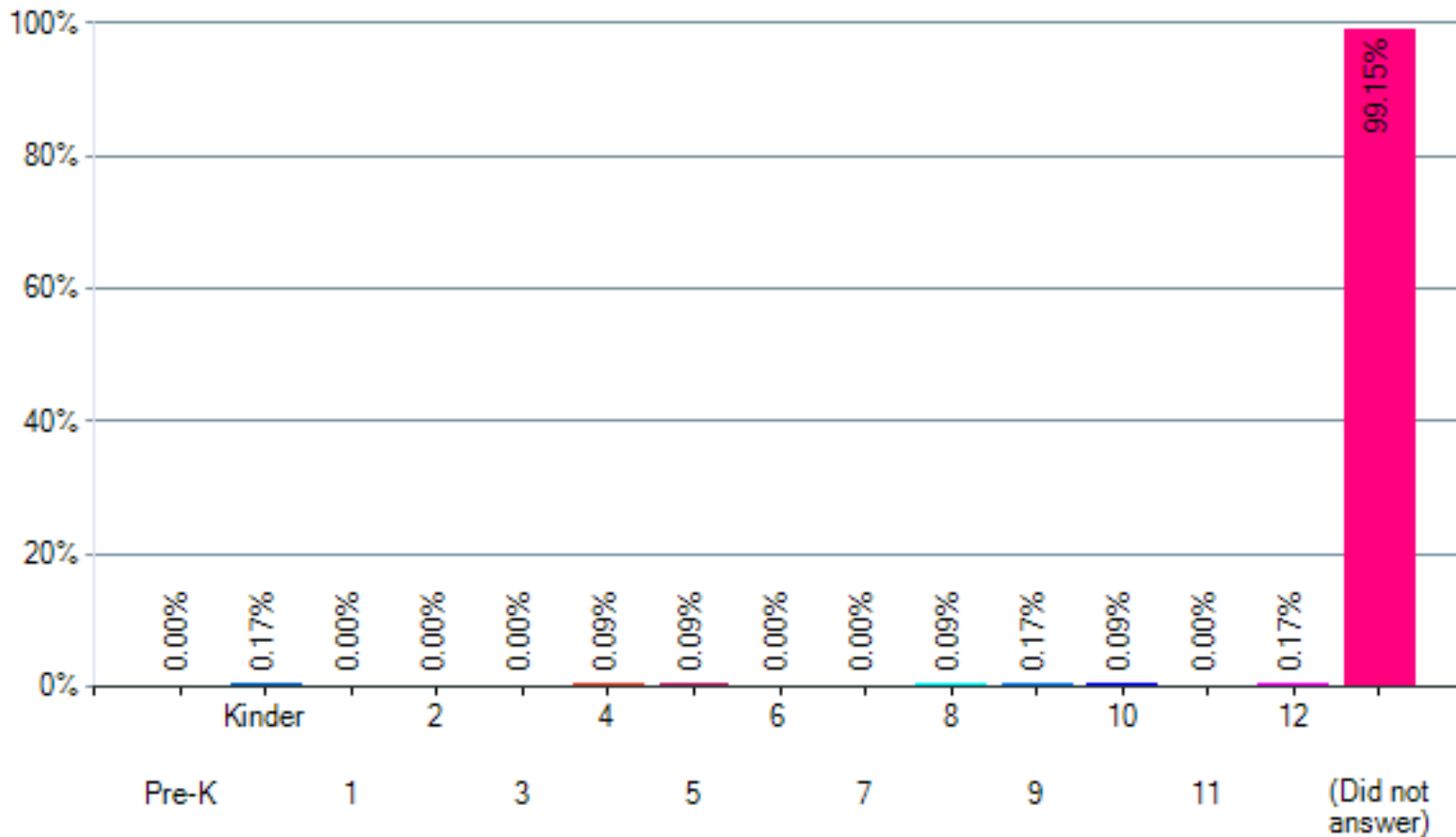
Does your child participate in the following programs? (Check all that apply)



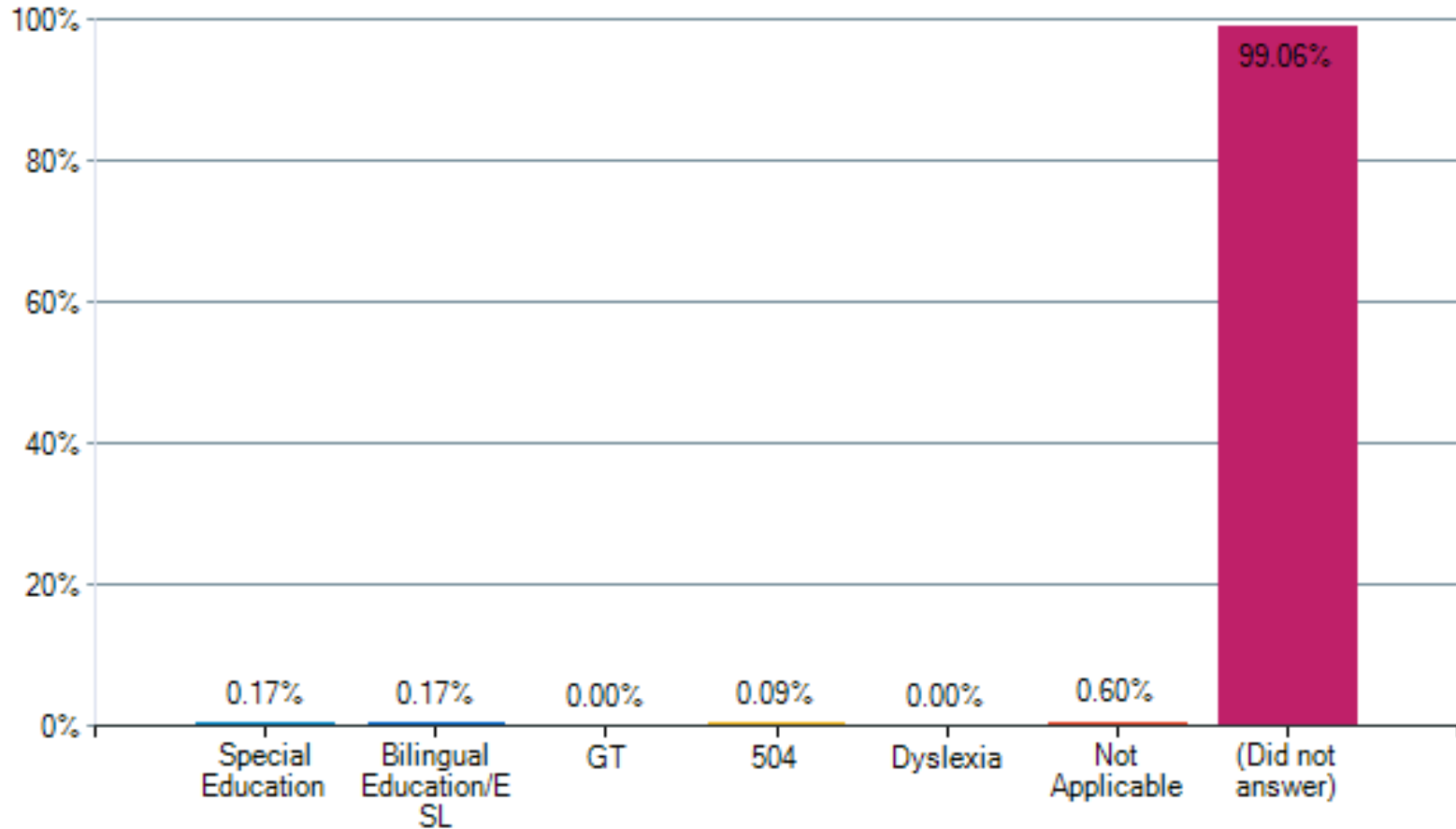
Do you have another child who will attend Lockhart ISD



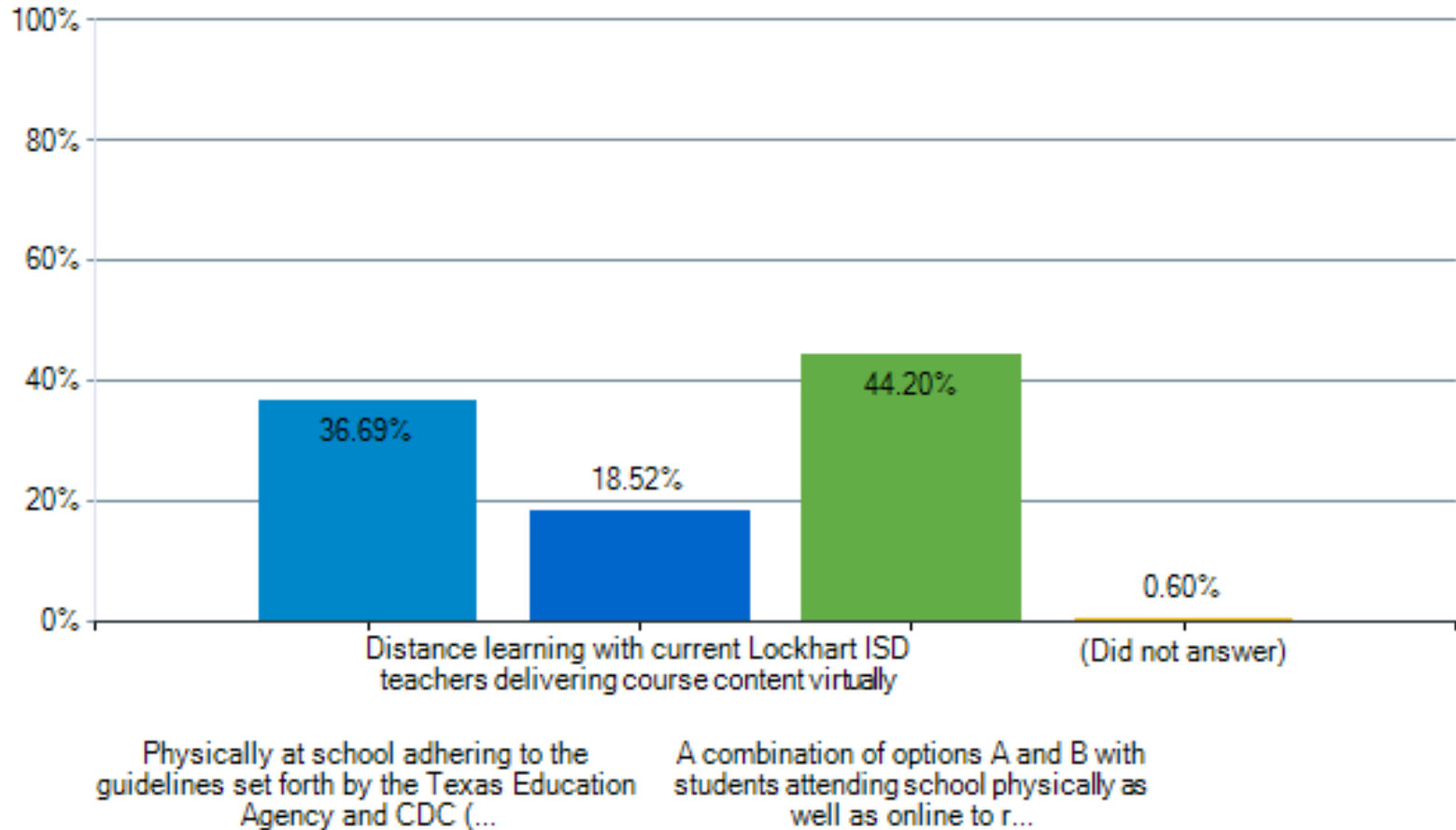
What grade level will your child enter in the 2020-2021 school year? (Select grade level)



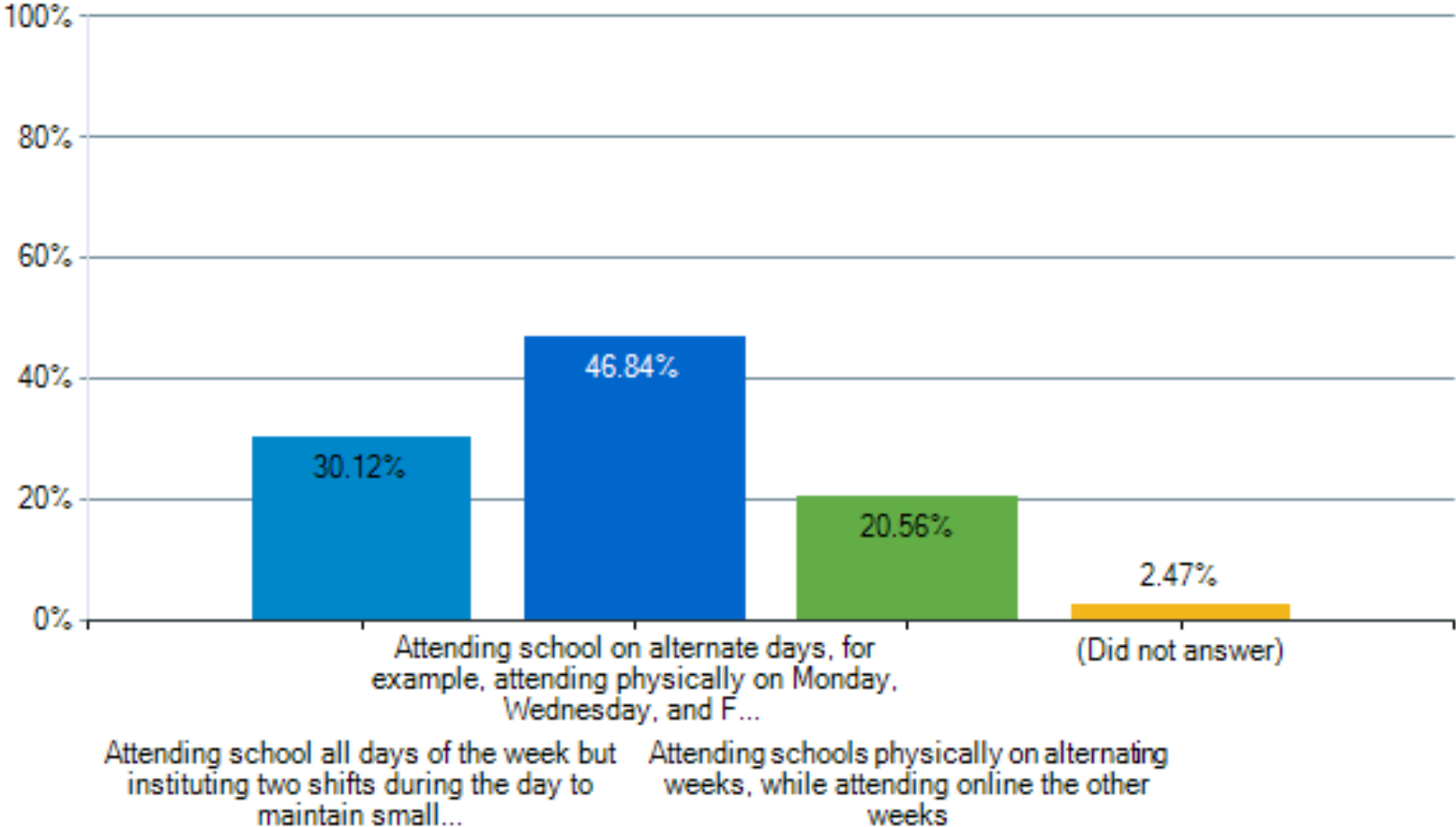
Does your child participate in the following programs? (Check all that apply)



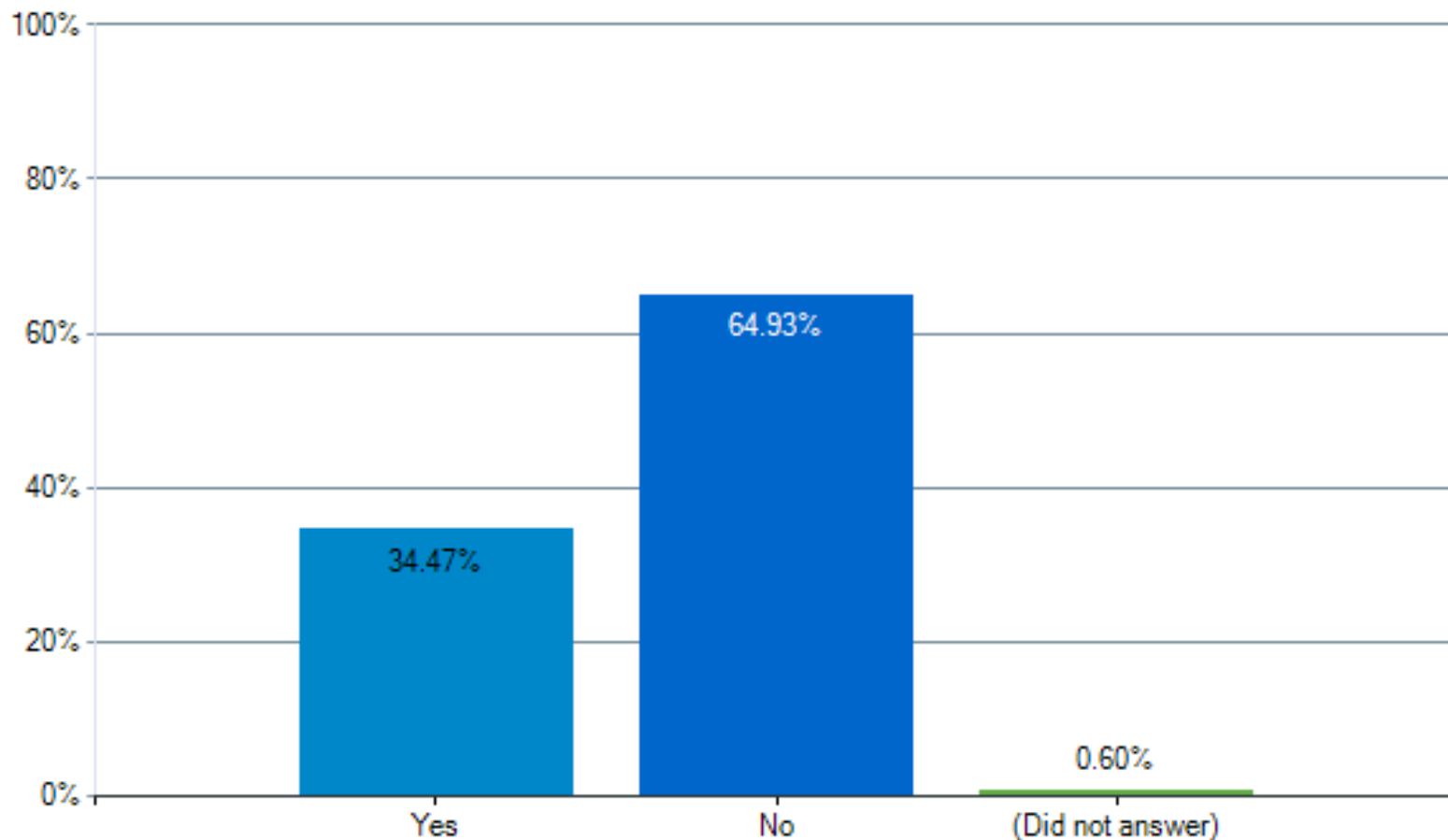
Assuming all safety guidelines for reopening of schools have been met, and if given a choice, how would you prefer for your child to attend school in 2020-2021? (Select only one)



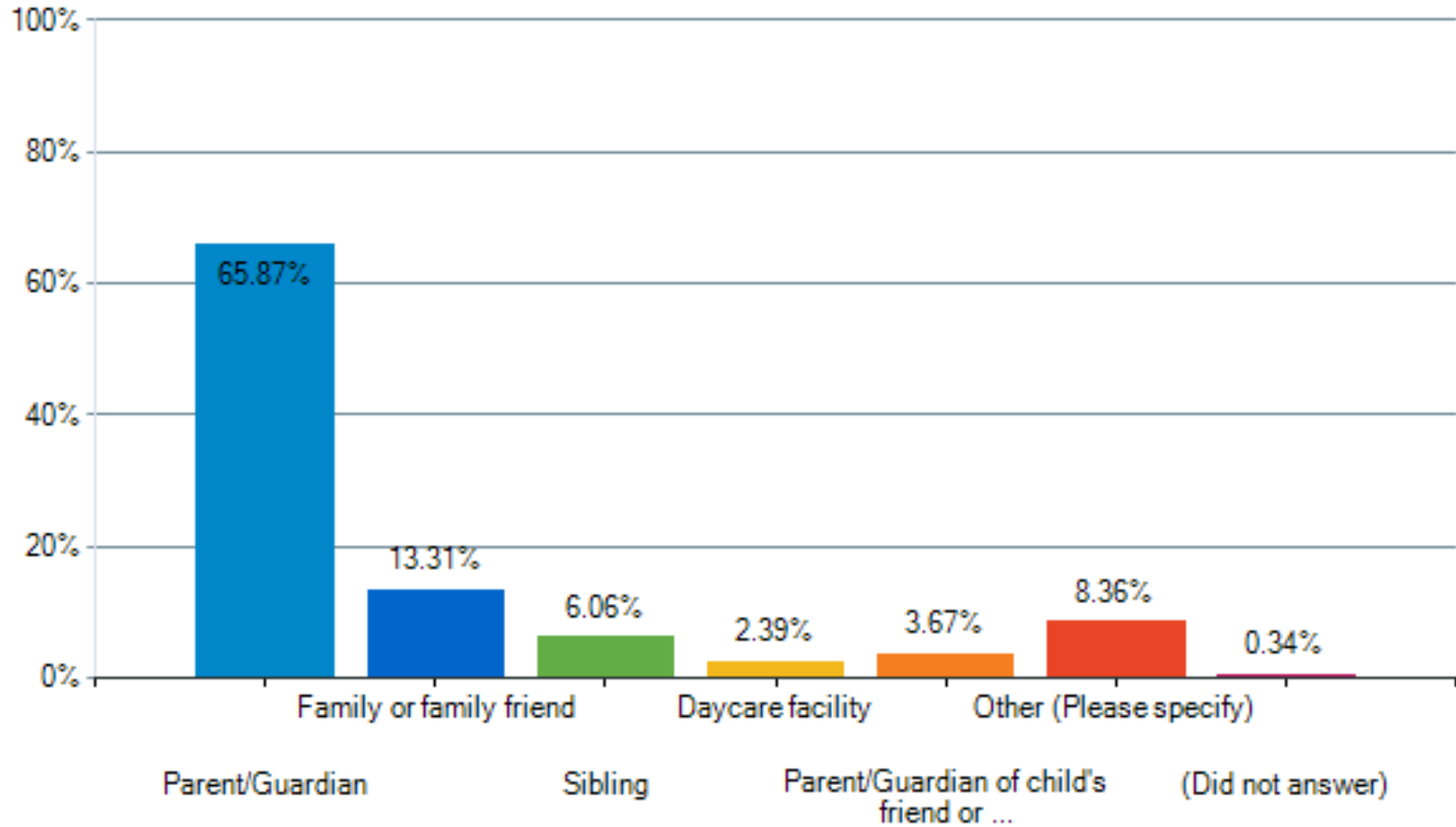
In the event that modifications are needed to reopen schools to ensure social distancing, which option would you prefer? (Select only one)



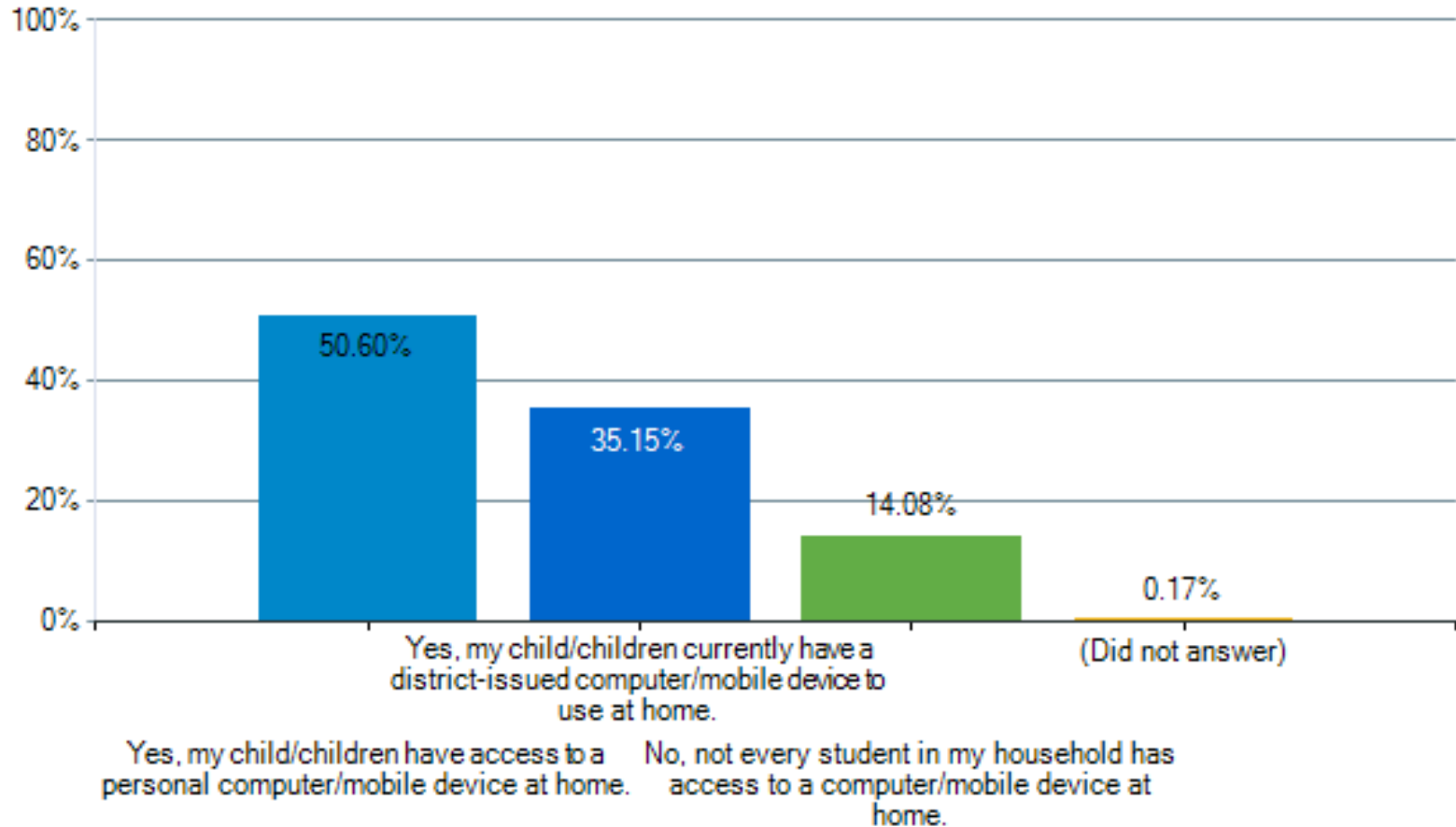
If the school reopens and your child is eligible for transportation, do you anticipate using Lockhart ISD transportation for the upcoming 2020-2021 school year? (Select only one)



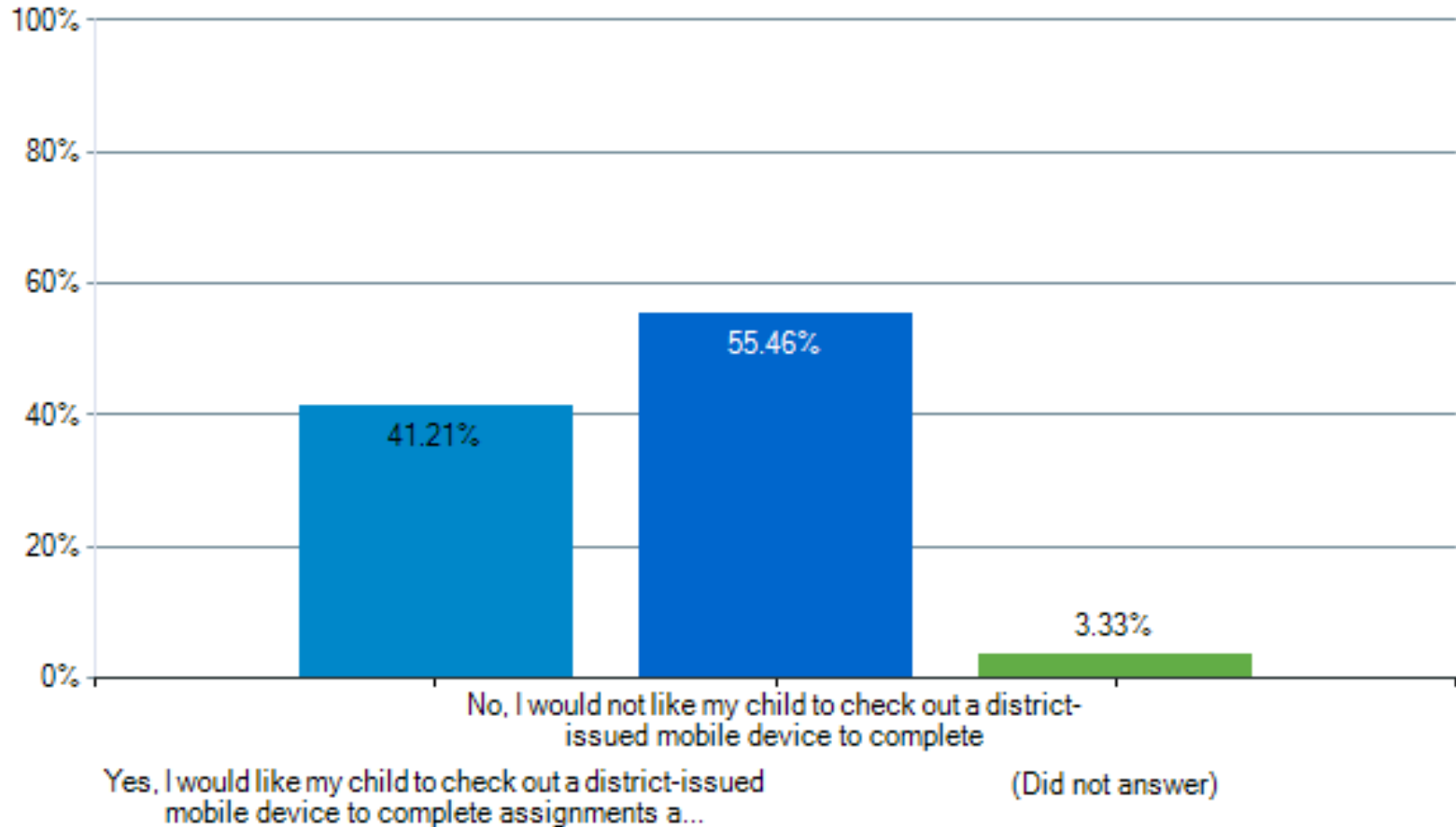
Who would your child's primary caregiver be throughout the day if we were to continue online learning throughout 2020-2021 school year?



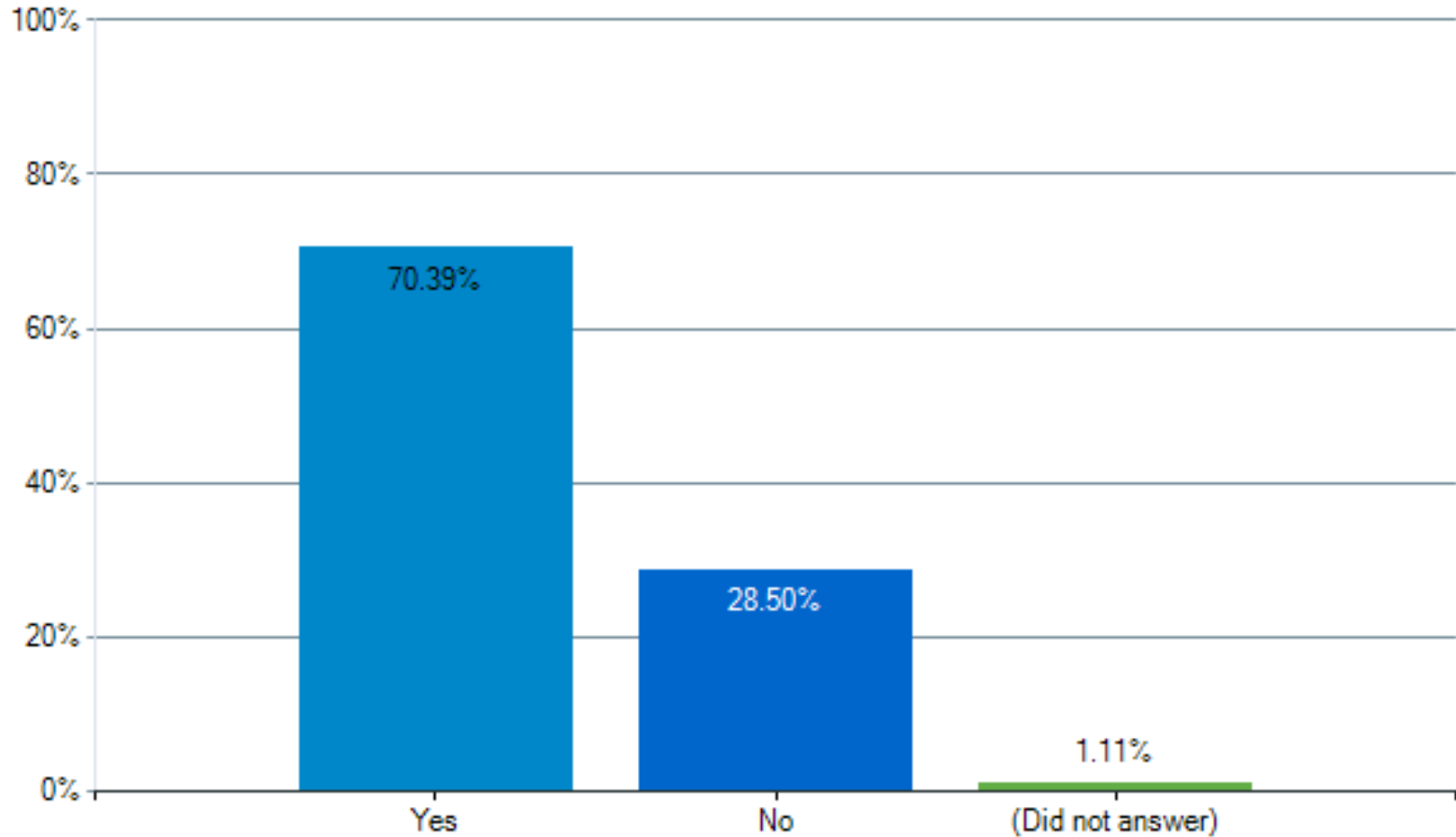
Does every child in your household who is an Lockhart ISD student have access to one or more computers at home to complete assignments? (Select only one)



Do any of your children need to check out a district-issued mobile device for use at home? (Select only one)



If we should return to distance learning in the fall, would you be interested in receiving training for student online programs?



Whether the Texas Education Agency, CDC, or Lockhart ISD required guidelines, will you be able to provide a mask for your child(ren)?

